	ADDENDUM	Document Identifier	N/A	Rev	N/A
		Effective Date	N/A		
		Review Date	N/A		

Suppliers Clarifications and Answers

07 October 2025

Description of services:

MONITORING OF KOMATI POWER STATION ASH DAMS AND WATER DAMS FOR A PERIOD OF 03 YEARS

Tender number: E1863GXMPKOM

Background

On the 18 September 2025 an Invitation to Tender for the above mentioned was published on Eskom Tender Bulleting and National Treasury.

Suppliers Clarifications and Answers:

1. Ash Dam Facility (ADF) Operational Status

1.1. Please confirm whether the Ash Dam Facility (ADF) — comprising the Old Ash Dam (Ash Dam 1, Ash Dam Extension 1, Ash Dam Extension 2) and the New Ash Dam (Ash Dam Extension 3D) — is currently dormant (i.e., not operational, with water on the facility only due to rainfall and not ash deposition)?

1.2. If so, please indicate whether the ADF is expected to remain dormant for the duration of the three-year contract period.

Response:

1.1 The Operational activities on the Ash Dams are as follows:

-Old Ash Dam Complex- This is the old ashing facility that the station was using. By the time the station stopped operations, ash disposal activities had been ceased on this complex.

New Ash Dam and Sumps- This is the facility that was meant to be used for ash disposal had the station continued with coal generating activities. The new ash dam is currently used for water storage purposes particularly to alleviate the pressure of possible dam overflows from the other dams.

Ash Water Return Dam- This dam is currently used to store stormwater effluent from the Old Ash Dam complex.

2 The Ash Dams will not be used for ashing for the duration of the contract as the station has halted coal operations. However, as the station is transitioning to renewables, if there are plans introduced regarding the future use of the Ash Dams these will be communicated to the appointed service provider.


2. DSO Registration and Classification

2.1. Please confirm which of the dams (ADF and water dams) are registered and classified with the Dam Safety Office (DSO) as Category II or III dams with a safety risk.

Controlled Disclosure

When downloaded from the document management system, this document is uncontrolled and the responsibility rests with the user to ensure it is in line with the authorised version on the system.

No part of this document may be reproduced without the expressed consent of the copyright holder, Eskom Holdings SOC Ltd, Reg No 2002/015527/30.

	ADDENDUM	Document Identifier	N/A	Rev	N/A
		Effective Date	N/A		
		Review Date	N/A		

Response:

Currently the only dams that are registered by the Dam Safety Office are 3rd Recovery Dam and AWR (Ash Water Return) Dam. They are both classified as category 2 dams with a safety risk. Lake Finn and Lake Stoffel do not qualify as dams with a significant safety risk that would require classification and registration with the DSO. The Raw Water Reservoirs have not been registered or classified. The appointed contractor shall advise with regard to their status.

3. Inspection Frequency

3.1. The requirement for “monthly inspections” and “monthly meetings” is noted. Please clarify:

Whether these must be physical site inspections each month, or if remote/desktop inspections will be acceptable during dry months.

Whether all dams (ash and water dams) must be inspected monthly, or if only quarterly inspections are required for the following water dams:

Lake Stoffel

Lake Finn

3rd Recovery Dam

Four Raw Water Reservoirs

Response:

The requirement is that all inspections be done on-site physically. Desktop inspections will not be acceptable and bidders should price for physical inspections. The price list stipulates the frequency for the inspections, which is monthly for the Ash Dams and quarterly for the other dams. The 3rd Recovery Dam is located within the ash dam facility and because it is a dam classified as a dam with a safety risk, considerations can be made to include it in the monthly inspections. However, bidders should price according to the stipulations in the price list.

4. Two-Yearly Engineering Assessments

4.1. The scope lists several two-yearly tasks:

Dam Safety Evaluation (DSE)

Slope stability analysis

Dam break analysis

Geotechnical investigation

Please confirm whether these are to be conducted independently or as part of a single integrated DSE exercise every two years?

Confirm that these activities apply only to classified dams requiring DSE (i.e., those registered with the DSO)?


Response:

These tasks all form part of the single integrated Dam Safety Evaluation exercise hence they have been itemised under the heading Dam Safety Evaluation on the price list/BOQ. The reason that they have been listed individually is that previously there have been challenges in terms of having sufficient funds for all the tasks associated with the Dam Safety Evaluation as service providers have under-priced. So, listing these tasks individually is to ensure that sufficient funds are availed for each task and if there are some activities that will not be undertaken for the Dam Safety Evaluation, then these will be a saving for the contract.

Controlled Disclosure

When downloaded from the document management system, this document is uncontrolled and the responsibility rests with the user to ensure it is in line with the authorised version on the system.

No part of this document may be reproduced without the expressed consent of the copyright holder, Eskom Holdings SOC Ltd, Reg No 2002/015527/30.

	ADDENDUM	Document Identifier	N/A	Rev	N/A
		Effective Date	N/A		
		Review Date	N/A		

These tasks will only be undertaken for dams classified as dams with a safety risk with the Dam Safety Office which currently are AWR Dam and 3rd Recovery Dam.

5. Geotechnical Investigations

5.1. Please confirm the required depth and number of test positions/lines for the planned geotechnical investigation.

5.2. Are there any existing or previously conducted geotechnical investigations (e.g., drilling logs, test pits, SCPTu results) for the ash or water dams?

5.3. If available, please indicate the locations and scope of any previous investigations.

5.4. Please clarify whether the geotechnical work for this contract is limited to CPTu testing only, or if other tests, sampling and laboratory testing are also required.

Response:


The geotechnical work is limited to CPTu tests for this contract. These will be applicable to the Ash Dams only [AWR and Old Ash Dams] .Any other geotechnical work required will be negotiated separately.

Current available CPTu tests are for only the Old Ash Dam Complex and they were done this year. The scope and the test positions are as shown in the image below.

Controlled Disclosure

When downloaded from the document management system, this document is uncontrolled and the responsibility rests with the user to ensure it is in line with the authorised version on the system.

No part of this document may be reproduced without the expressed consent of the copyright holder, Eskom Holdings SOC Ltd, Req No 2002/015527/30.

	ADDENDUM	Document Identifier	N/A	Rev	N/A
		Effective Date	N/A		
		Review Date	N/A		

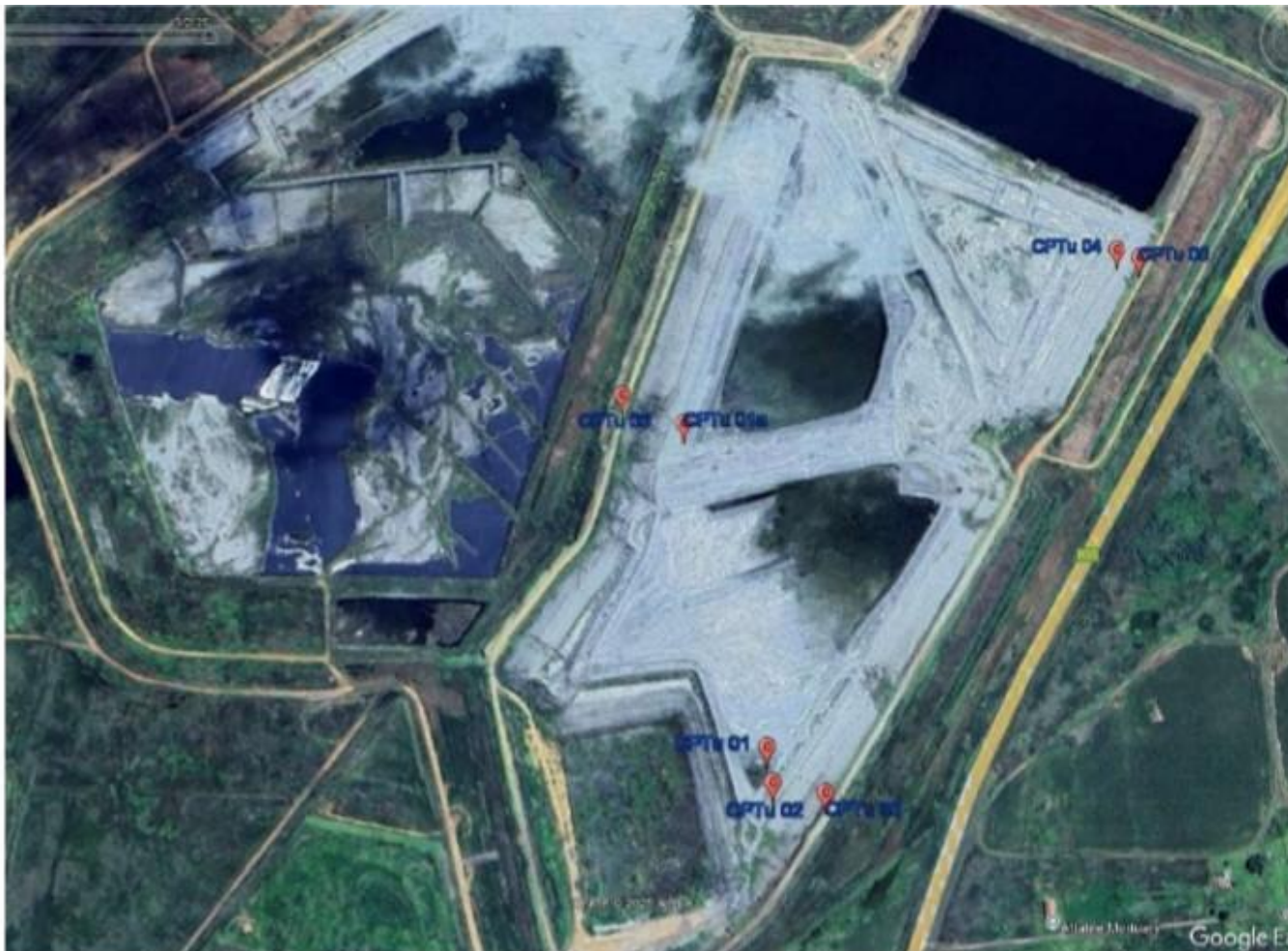


Figure 1: Komati Ash Dam Facility

Country: South Africa
Location: Komati Ash Dam Facility (ADF)
Coordinates: 26° 6'5.29"S 29°28'32.89"E
Owner(s): Eskom


The scope of work for the site investigation included the following:

- Cone Penetration Testing (SCPT) on 6 (six) locations
 - CPT test: 6 (six) No.
 - Probing: 30 m or refusal (180m total)
 - Dissipation: 5m intervals (1080 minutes)

Controlled Disclosure

When downloaded from the document management system, this document is uncontrolled and the responsibility rests with the user to ensure it is in line with the authorised version on the system.

No part of this document may be reproduced without the expressed consent of the copyright holder, Eskom Holdings SOC Ltd, Reg No 2002/015527/30.

	ADDENDUM	Document Identifier	N/A	Rev	N/A
		Effective Date	N/A		
		Review Date	N/A		

There will be a requirement for CPTu tests to include AWR dam as it is also an earth embankment dam and is currently operational [AWR dam is the dam north of the Old Ash Dam complex in the image above]. In terms of the number of test positions for AWR, the appointed contractor will advise.

6. Design and Engineering Tasks

6.1. The scope item “Develop designs and design report with drawings as and when required” lacks definition. Please provide guidance on the expected scale and nature of such design work to enable appropriate pricing.

6.2. The APP is also required to “perform all minor modifications including drawings.” Please clarify what constitutes a minor modification and whether any examples are available.

Response:

Understandably, this requirement is difficult to quantify as it is not based on a solid certain requirement for design work. However, due to the fact that the station is non-operational, any design work will most likely be for minor repair works or for improving the functioning of the dams. (An example would be increasing the size of a spillway). Should the scale of design work be larger than priced, it shall be negotiated separately depending on the scope of work.

7. Water Balance and Hydraulic Analysis

7.1. The scope item “Assess water balance predictions” requires clarification:

Is this for the entire power station water system or for specific dams?

If for specific dams, please specify which.

7.2. Confirm whether the task involves developing a new dynamic water balance model or reviewing and updating existing models, and in which software or format Eskom requires this to be delivered.

7.3. Regarding the 1:50-year storm and freeboard calculation, please confirm if the hydrological analysis must be re-evaluated or simply verified using existing data.

Response:

7.1 The water balance will be for the entire water system for the power station. This is because the station currently operates on a closed and interconnected system with regards to the movement of water.

7.2 The task will require reviewing and updating the existing water balance model. Currently the water balance is presented in the form of an Excel Spreadsheet.

7.3 With regard to this, the appointed service provider will be required to re-evaluate the hydrological calculations and check if the flood calculations made previously are still applicable.


8. Operational Strategy and Support

8.1. The scope requires “developing an overall operational strategy between engineering, maintenance, and operating functions.” Please clarify whether this entails facilitation and documentation only, or if implementation support (such as workshops, training, or change management) is also expected.

Controlled Disclosure

When downloaded from the document management system, this document is uncontrolled and the responsibility rests with the user to ensure it is in line with the authorised version on the system.

No part of this document may be reproduced without the expressed consent of the copyright holder, Eskom Holdings SOC Ltd, Req No 2002/015527/30.

	ADDENDUM	Document Identifier	N/A	Rev	N/A
		Effective Date	N/A		
		Review Date	N/A		

Response:

Implementation support is also expected. Although workshops and training might be fixed for purposes of pricing, bidders should also consider that because the station is currently transitioning, room should be made for flexibility considering the dynamic nature of the transition.

9. Inspection and Survey Methods

9.1. The “quarterly station drain inspection” — please confirm whether this is a stand-alone deliverable or incorporated into the regular monthly or quarterly inspection schedule.

9.2. For the annual aerial survey and capacity analysis, please confirm:

The preferred survey method (LiDAR, drone photogrammetry, or manual).

Whether survey control and baseline data will be provided by Eskom.

Response:

9.1 There is a discrepancy for this activity as on the BOQ, the item has been quantified as an annual activity but on the scope of work it is written as quarterly. For this item and any other activity where such a discrepancy exists, what has been quantified on the BOQ is what will apply. The drain inspections are a stand-alone deliverable. In terms of logistics, the appointed service provider will decide how and when these inspections will be done.

9.2 The station does not have a preferred method for the aerial survey. Bidders will decide which method will allow them to bid competitively; the station just requires that the aerial survey be done for compliance. The appointed contractor will be supplied with the last aerial survey data to use as baseline data for the aerial survey that they will do.

Regards

NP Mbamba

Name: Nhlanhla Mbamba

Address: Eskom Komati Power Station

Date: 07 October 2025

Controlled Disclosure

When downloaded from the document management system, this document is uncontrolled and the responsibility rests with the user to ensure it is in line with the authorised version on the system.

No part of this document may be reproduced without the expressed consent of the copyright holder, Eskom Holdings SOC Ltd, Reg No 2002/015527/30.